

Fragment Analyzer Run Summary:

Filename and Data Path: C:\AATI\Data\2013 06 07\Manlin_2690_130524Wax_2443TE-2453TE 15-04-50\2

Filename and Data Path: 013 06 07 15H 04M.raw

Created: Friday, June 07, 2013 3:20:46 PM

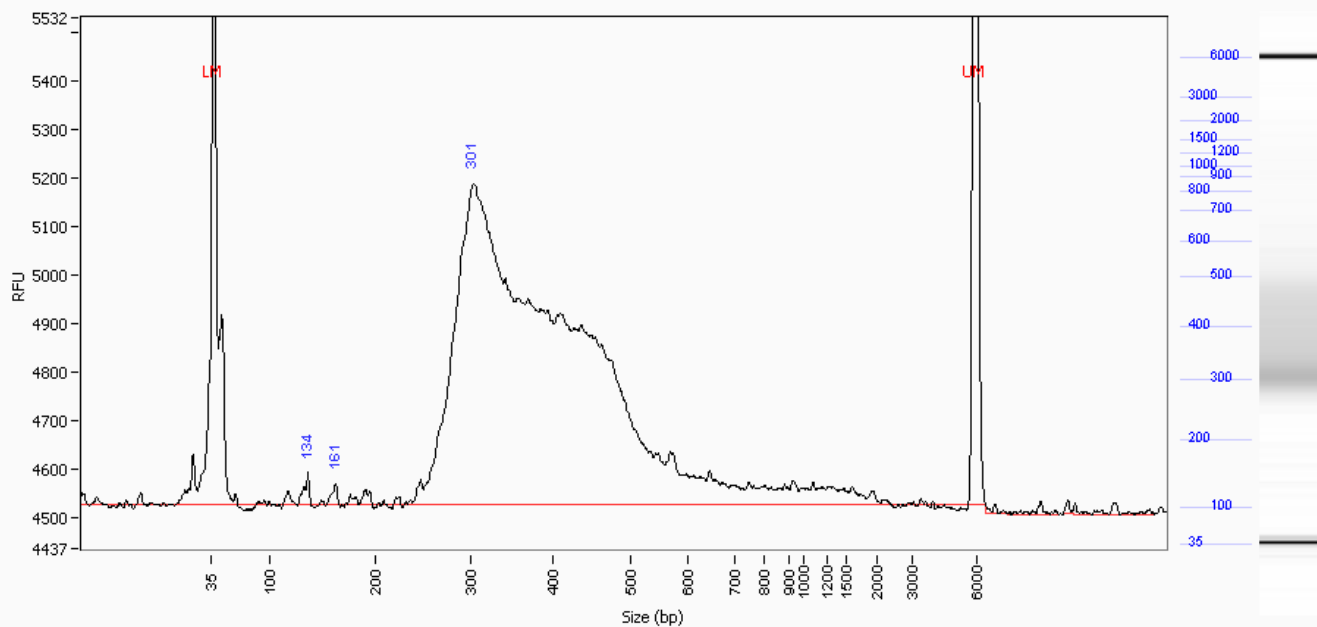
of Capillaries: 9

Analysis Mode: NGS

Sample: D13-2445TE

Well Location: H4

Created: Friday, June 07, 2013 3:20:46 PM

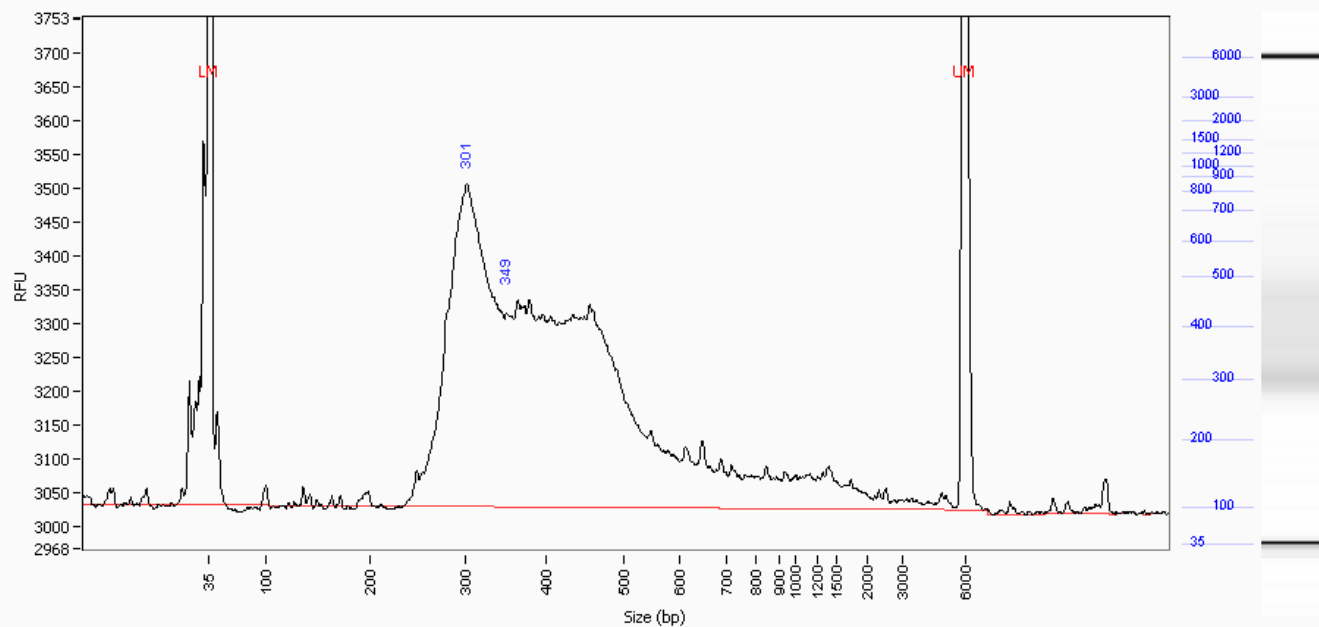


Peak	Size (bp)	Conc. (ng/uL)	Molarity (nmole/L)	Peak Height (RFU)	Corr. Peak Area	Norm. MT (mm:ss)
1	35 (LM)	0.0455	2.125	2408	18.551	18:39
2	134	0.0140	0.171	65	0.475	21:23
3	161	0.0094	0.096	42	0.320	22:12
4	301	1.0243	5.598	661	34.795	26:11
5	6000 (UM)	0.0237	0.007	2299	9.673	40:51
TIC:		1.0477	5.865			
Total Conc.		2.7214				

Sample: D13-2446TE

Well Location: H5

Created: Friday, June 07, 2013 3:20:46 PM

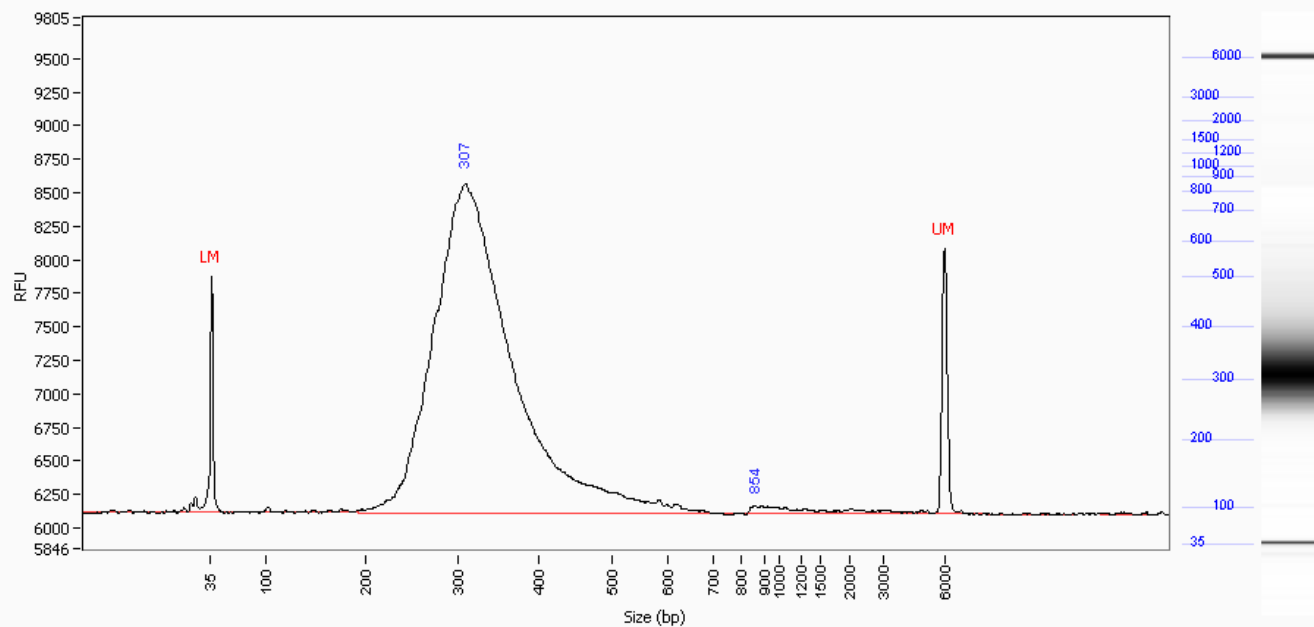


Peak	Size (bp)	Conc. (ng/uL)	Molarity (nmole/L)	Peak Height (RFU)	Corr. Peak Area	Norm. MT (mm:ss)
1	35 (LM)	0.0455	2.125	2783	20.338	18:39
2	301	0.7134	3.898	477	26.567	26:11
3	349	0.2901	1.365	306	10.802	27:21
4	6000 (UM)	0.0249	0.007	2638	11.122	40:51
TIC:		1.0034	5.264			
Total Conc.		1.9993				

Sample: D13-2447TE

Well Location: H6

Created: Friday, June 07, 2013 3:20:46 PM

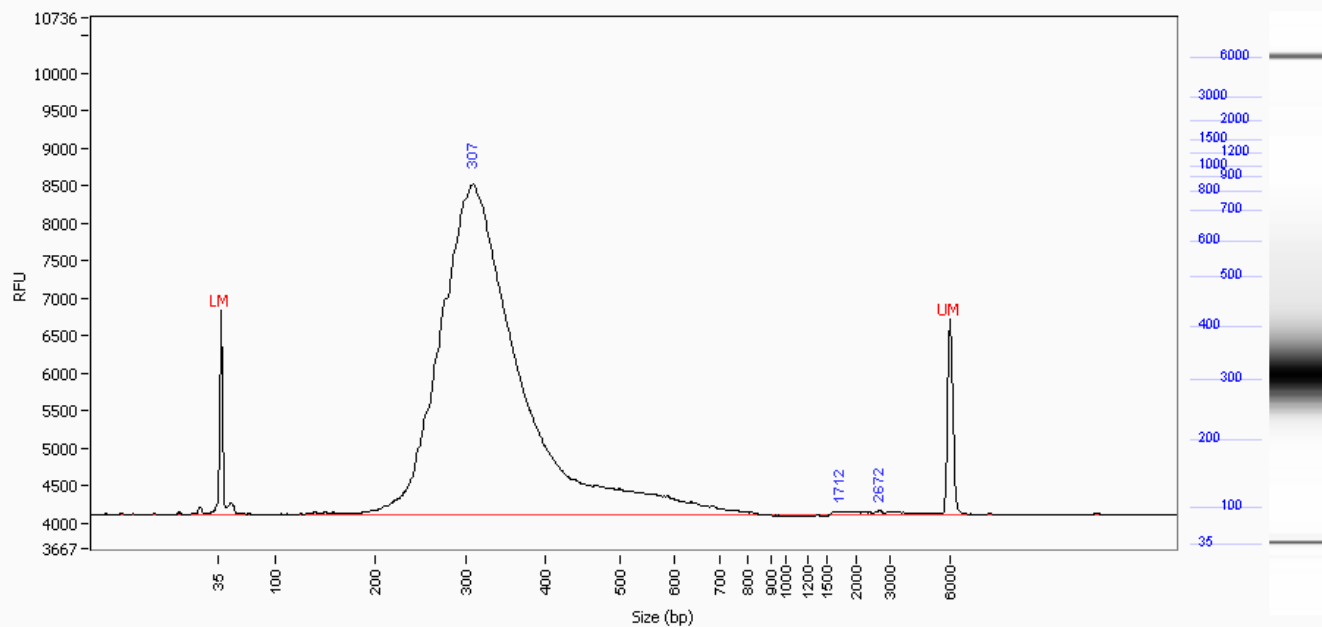


Peak	Size (bp)	Conc. (ng/uL)	Molarity (nmole/L)	Peak Height (RFU)	Corr. Peak Area	Norm. MT (mm:ss)
1	35 (LM)	0.0455	2.125	1756	9.481	18:39
2	307	13.2116	70.737	2455	229.370	26:20
3	854	0.0663	0.128	55	1.150	35:05
4	6000 (UM)	0.0412	0.011	1972	8.582	40:51
TIC:		13.2778	70.865			
Total Conc.		14.0625				

Sample: D13-2448TE

Well Location: H7

Created: Friday, June 07, 2013 3:20:46 PM

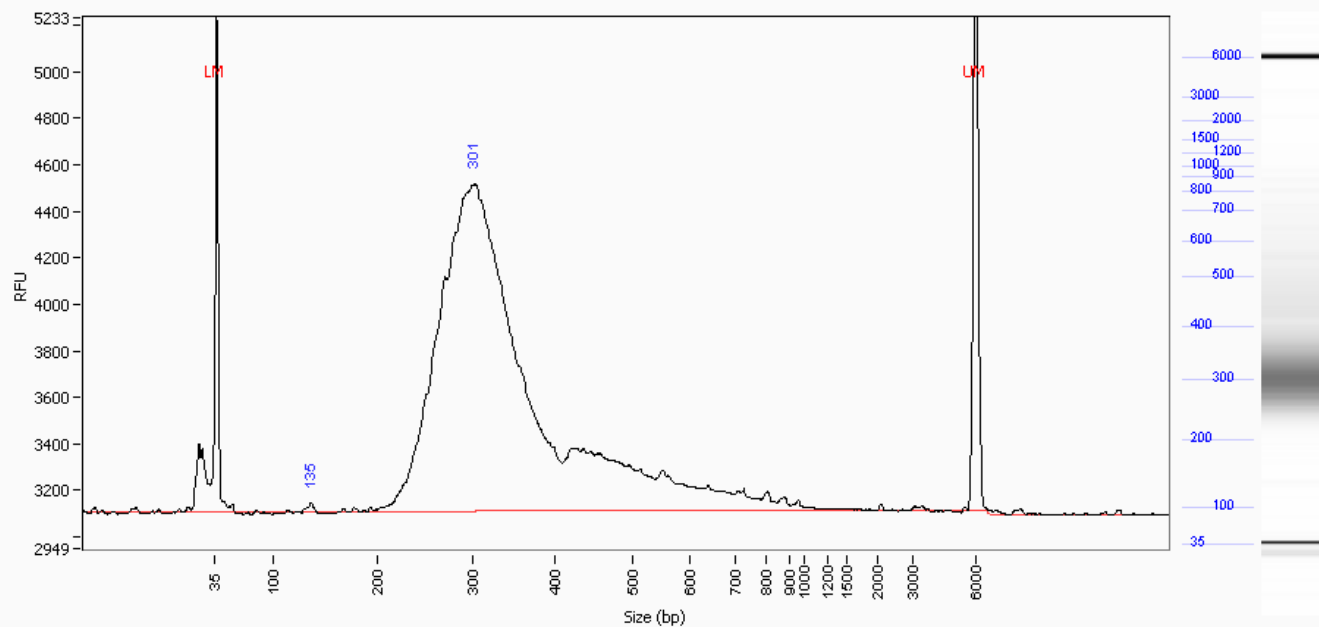


Peak	Size (bp)	Conc. (ng/uL)	Molarity (nmole/L)	Peak Height (RFU)	Corr. Peak Area	Norm. MT (mm:ss)
1	35 (LM)	0.0455	2.125	2722	13.894	18:39
2	307	15.8246	84.728	4403	402.610	26:20
3	1712	0.0341	0.033	36	0.868	37:28
4	2672	0.0098	0.006	48	0.248	38:40
5	6000 (UM)	0.0377	0.010	2605	11.502	40:51
TIC:		15.8684	84.766			
Total Conc.		17.1436				

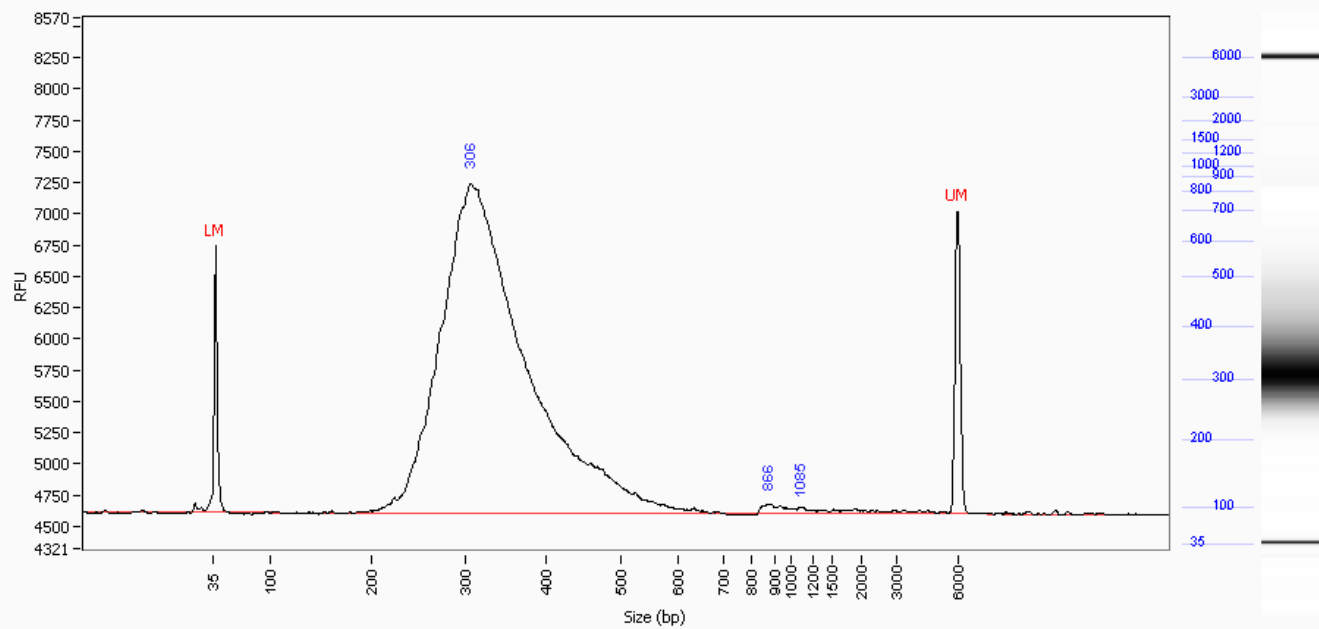
Sample: D13-2449TE

Well Location: H8

Created: Friday, June 07, 2013 3:20:46 PM



Peak	Size (bp)	Conc. (ng/uL)	Molarity (nmole/L)	Peak Height (RFU)	Corr. Peak Area	Norm. MT (mm:ss)
1	35 (LM)	0.0455	2.125	2193	11.598	18:39
2	135	0.0150	0.183	40	0.319	21:24
3	301	6.0679	33.161	1409	128.866	26:11
4	6000 (UM)	0.0433	0.012	2621	11.028	40:51
TIC:		6.0829	33.343			
Total Conc.		7.4984				

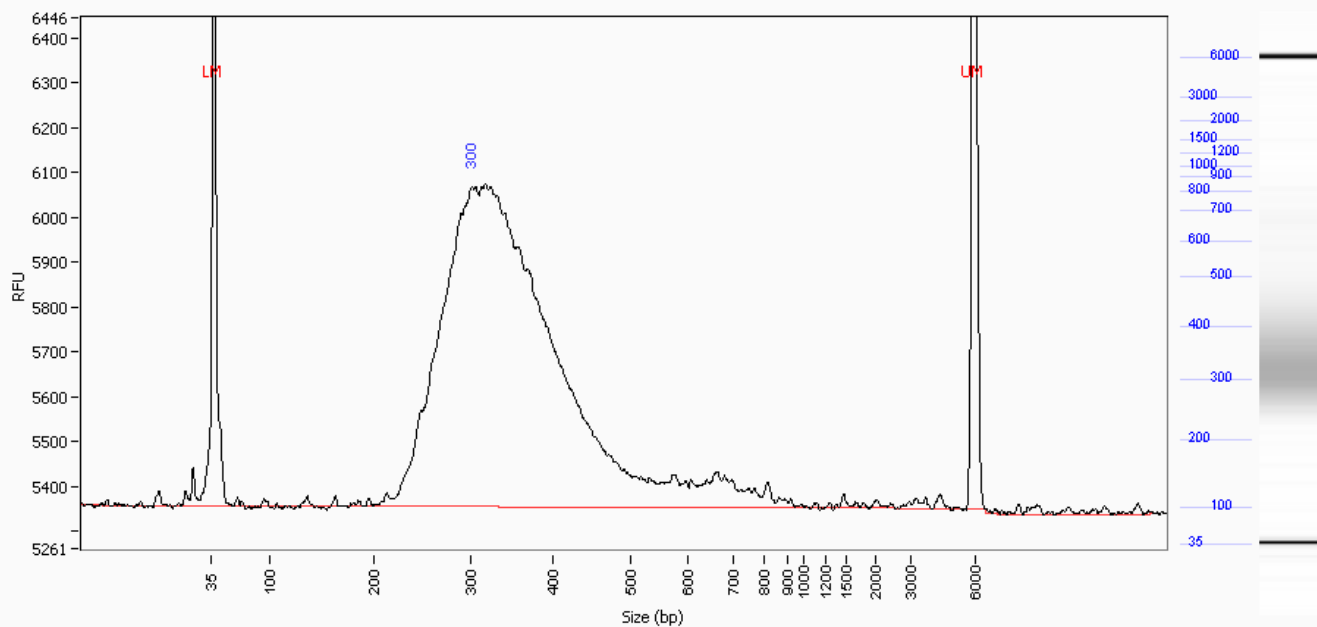
Sample: D13-2450TE**Well Location:** H9**Created:** Friday, June 07, 2013 3:20:46 PM

Peak	Size (bp)	Conc. (ng/uL)	Molarity (nmole/L)	Peak Height (RFU)	Corr. Peak Area	Norm. MT (mm:ss)
1	35 (LM)	0.0455	2.125	2134	11.932	18:39
2	306	12.3668	66.514	2635	270.206	26:18
3	866	0.0696	0.132	75	1.520	35:10
4	1085	0.0328	0.050	51	0.716	36:08
5	6000 (UM)	0.0399	0.011	2415	10.467	40:51
TIC:		12.4691	66.695			
Total Conc.		12.7503				

Sample: D13-2451TE

Well Location: H10

Created: Friday, June 07, 2013 3:20:46 PM

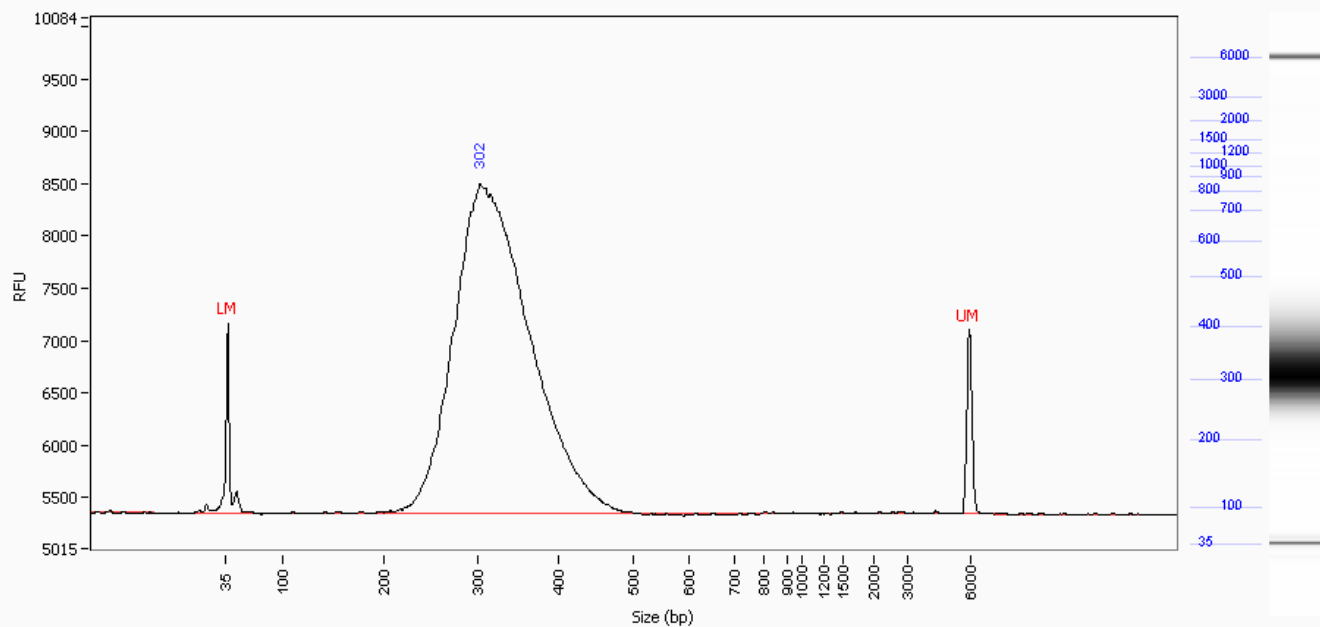


Peak	Size (bp)	Conc. (ng/uL)	Molarity (nmole/L)	Peak Height (RFU)	Corr. Peak Area	Norm. MT (mm:ss)
1	35 (LM)	0.0455	2.125	2278	13.814	18:39
2	300	2.4160	13.247	721	61.118	26:10
3	6000 (UM)	0.0306	0.008	2233	9.276	40:51
TIC:		2.4160	13.247			
Total Conc.		4.0019				

Sample: D13-2452TE

Well Location: H11

Created: Friday, June 07, 2013 3:20:46 PM

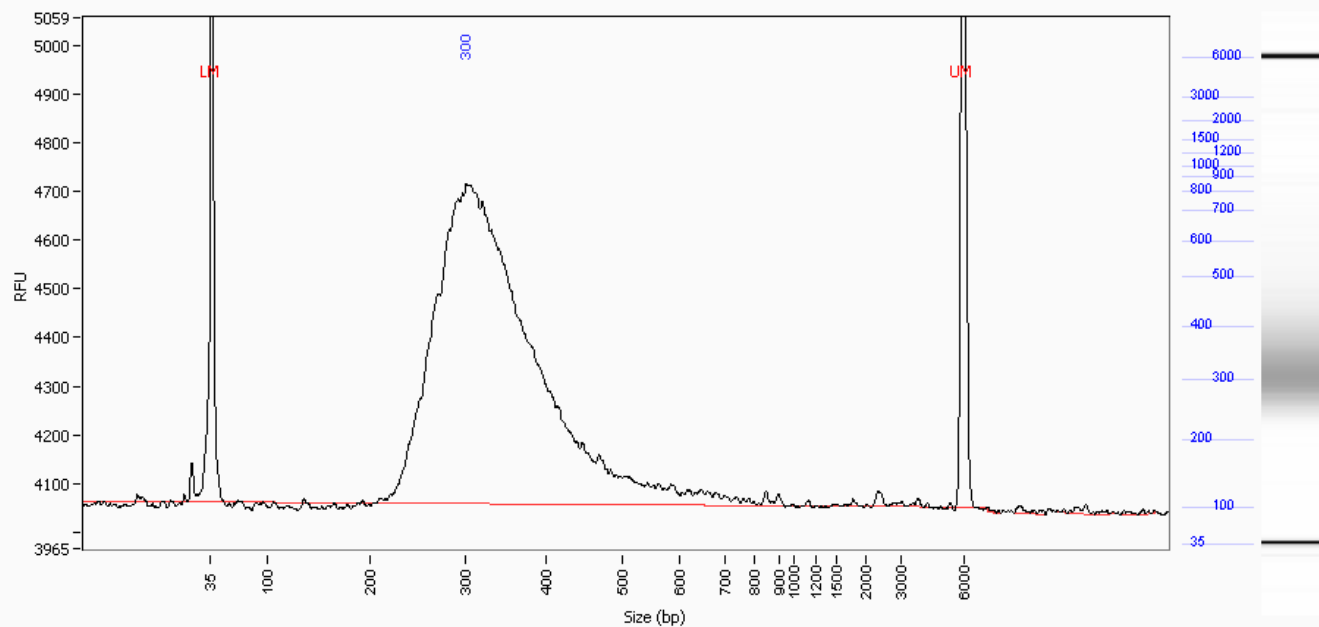


Peak	Size (bp)	Conc. (ng/uL)	Molarity (nmole/L)	Peak Height (RFU)	Corr. Peak Area	Norm. MT (mm:ss)
1	35 (LM)	0.0455	2.125	1812	9.703	18:39
2	302	16.5712	90.352	3146	294.438	26:12
3	6000 (UM)	0.0358	0.010	1758	7.644	40:51
TIC:		16.5712	90.352			
Total Conc.		16.7514				

Sample: D13-2453TE

Well Location: H12

Created: Friday, June 07, 2013 3:20:46 PM



Peak	Size (bp)	Conc. (ng/uL)	Molarity (nmole/L)	Peak Height (RFU)	Corr. Peak Area	Norm. MT (mm:ss)
1	35 (LM)	0.0455	2.125	2762	64.980	18:39
2	300	3.8149	20.917	2472	453.933	26:10
3	6000 (UM)	0.0536	0.015	5178	76.508	40:51
TIC:		3.8149	20.917			
Total Conc.		0.6738				

ID	Range	ng/uL	% Total	nmole/L	Avg. Size	%CV
H4: D13-2445TE	240 bp to 595 bp	2.494	91.6	10.8884	377	20.3
H5: D13-2446TE	240 bp to 595 bp	1.716	85.8	7.3518	384	21.1
H6: D13-2447TE	240 bp to 595 bp	13.439	95.6	66.5523	332	18.2
H7: D13-2448TE	240 bp to 595 bp	16.286	95.0	80.3885	333	19.6
H8: D13-2449TE	226 bp to 534 bp	6.885	91.8	34.3890	329	20.0
H9: D13-2450TE	224 bp to 533 bp	12.347	96.8	60.6867	335	17.6
H10: D13-2451TE	220 bp to 492 bp	3.637	90.9	17.7349	337	17.0
H11: D13-2452TE	240 bp to 595 bp	16.387	97.8	83.3374	323	13.2
H12: D13-2453TE	240 bp to 595 bp	0.644	95.6	3.1263	339	19.5