

***Fragment Analyzer Run Summary:***

**Filename and Data Path:** C:\AATI\Data\2013 06 07\130524Wax\_2454TE-2465TE 17-05-28\2013 06 07 17  
H 05M.raw

**Created:** Friday, June 07, 2013 5:21:23 PM

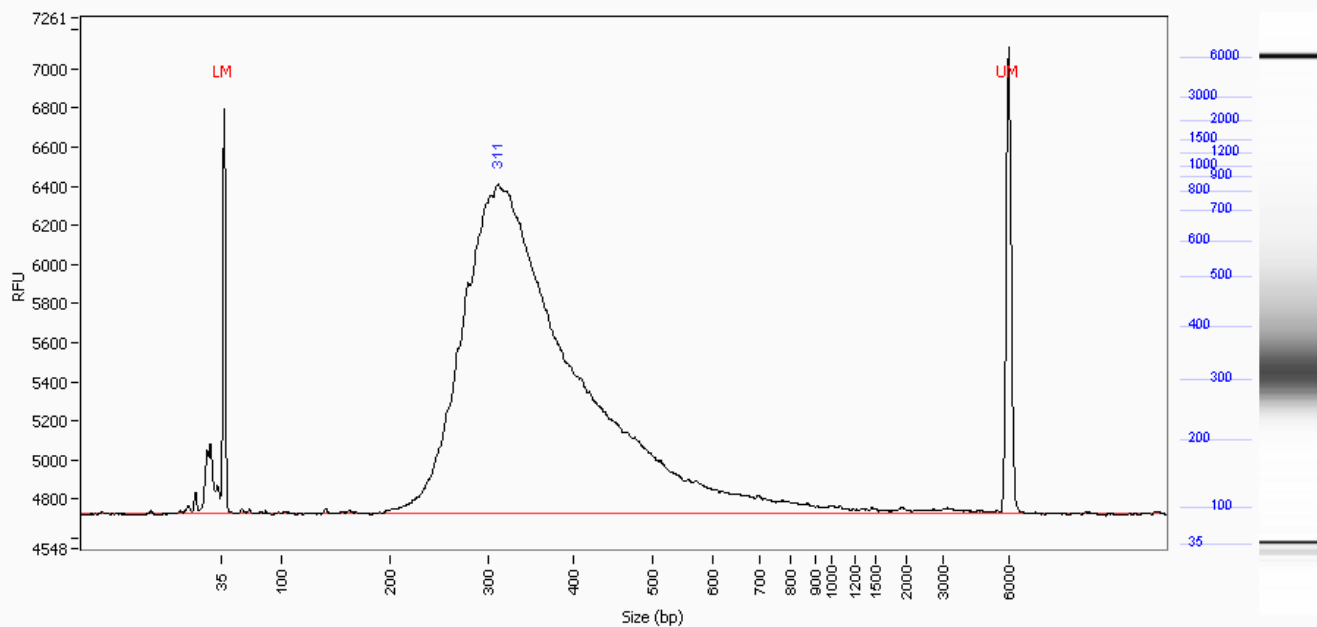
**# of Capillaries:** 12

**Analysis Mode:** NGS

**Sample:** D13-2454TE

**Well Location:** A1

**Created:** Friday, June 07, 2013 5:21:23 PM

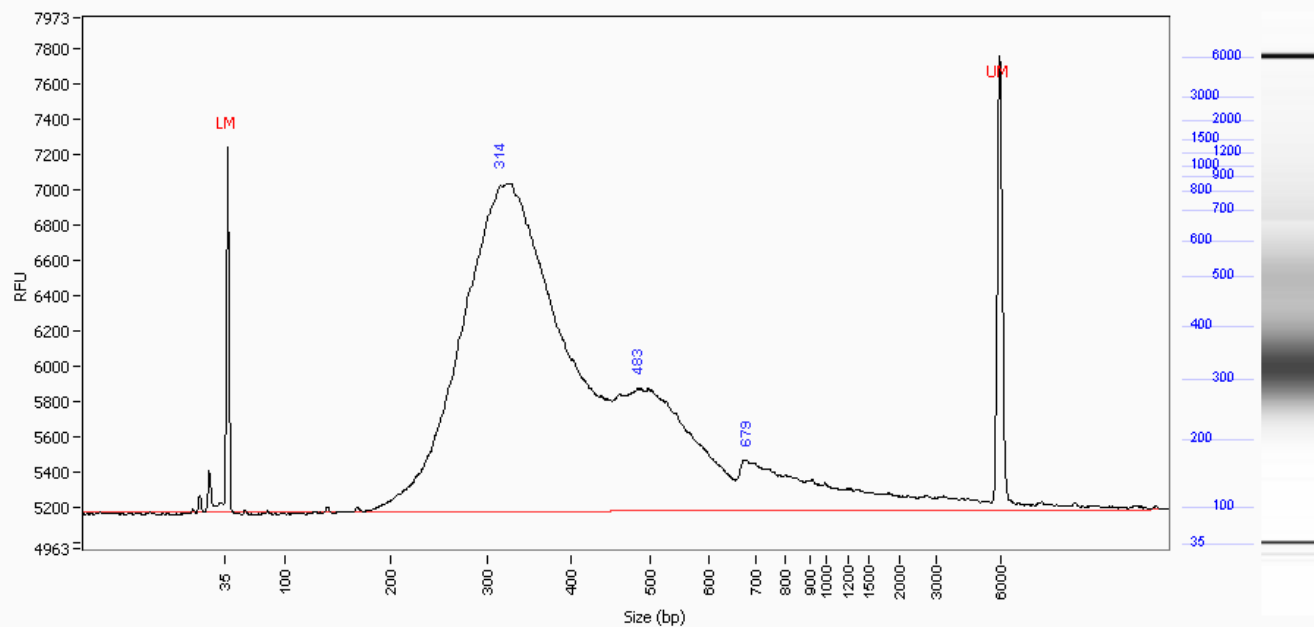


Peak	Size (bp)	Conc. (ng/uL)	Molarity (nmole/L)	Peak Height (RFU)	Corr. Peak Area	Norm. MT (mm:ss)
1	35 (LM)	0.0455	2.125	2068	9.582	18:39
2	311	12.0070	63.572	1687	210.683	26:25
3	6000 (UM)	0.0468	0.013	2388	9.861	40:51
TIC:		12.0070	63.572			
Total Conc.		12.8014				

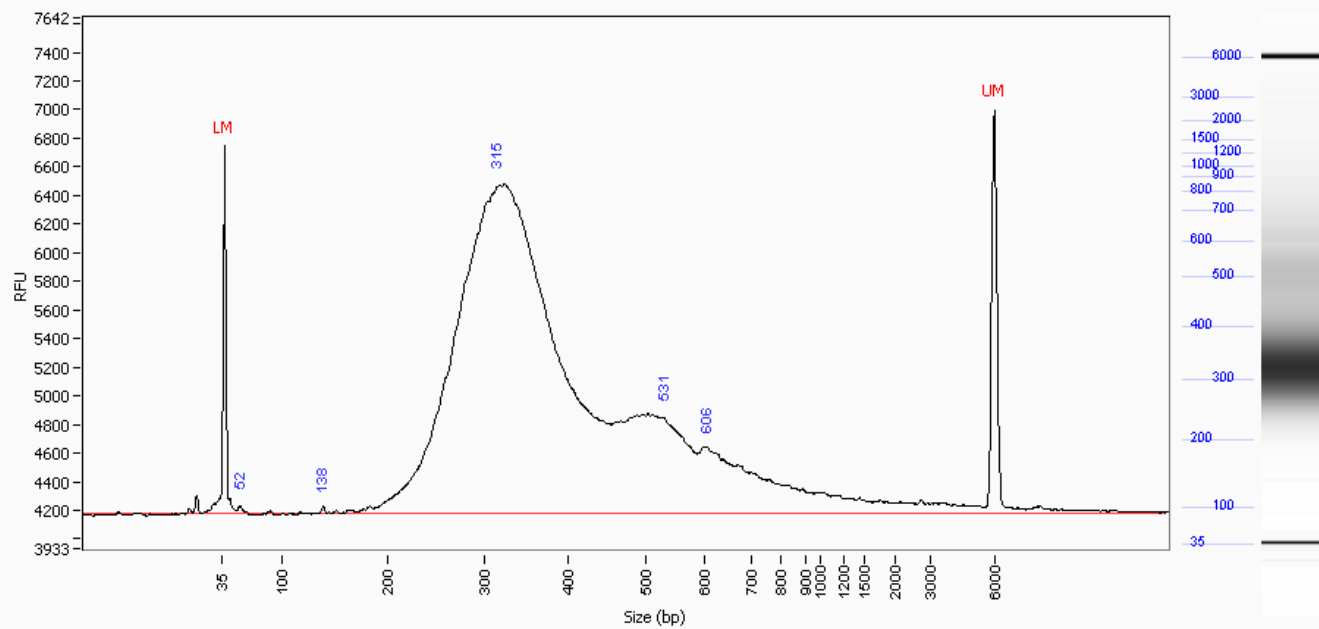
**Sample:** D13-2455TE

**Well Location:** A2

**Created:** Friday, June 07, 2013 5:21:23 PM



Peak	Size (bp)	Conc. (ng/uL)	Molarity (nmole/L)	Peak Height (RFU)	Corr. Peak Area	Norm. MT (mm:ss)
1	35 (LM)	0.0455	2.125	2069	9.205	18:39
2	314	13.1680	68.951	1859	221.960	26:30
3	483	1.9016	6.478	696	32.054	30:26
4	679	0.7301	1.770	289	12.306	33:33
5	6000 (UM)	0.0552	0.015	2572	11.166	40:51
TIC:		15.7996	77.199			
Total Conc.		18.1089				

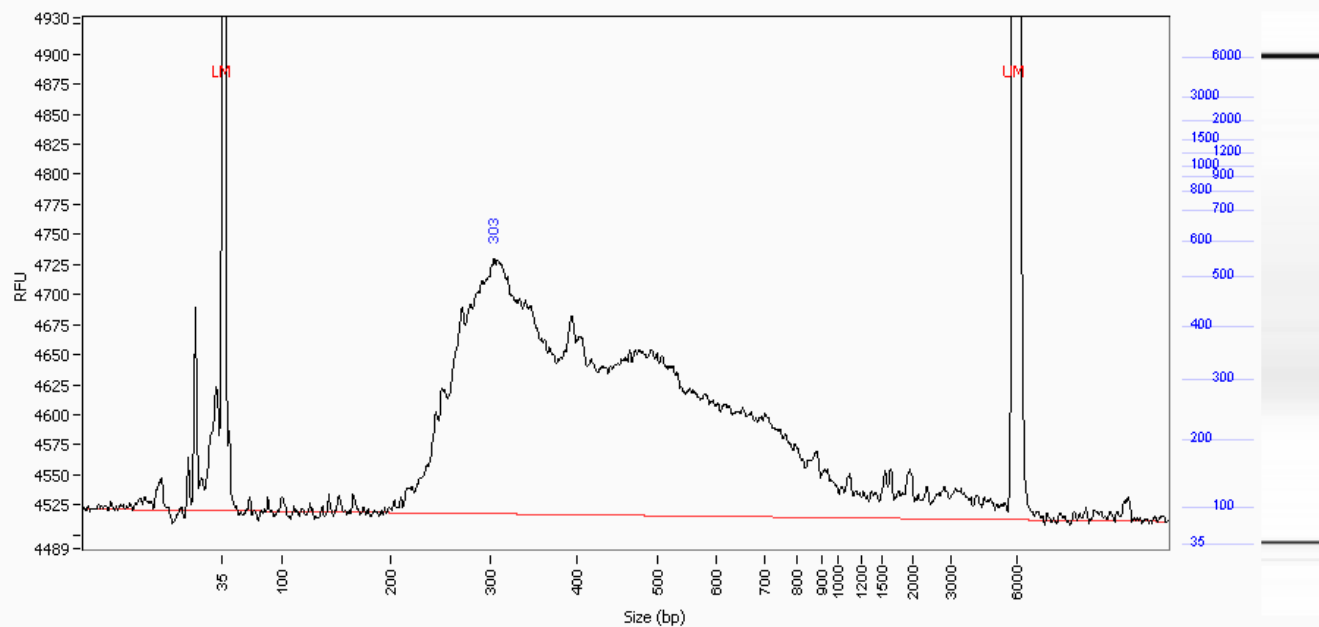
**Sample:** D13-2456TE**Well Location:** A3**Created:** Friday, June 07, 2013 5:21:23 PM

Peak	Size (bp)	Conc. (ng/uL)	Molarity (nmole/L)	Peak Height (RFU)	Corr. Peak Area	Norm. MT (mm:ss)
1	35 (LM)	0.0455	2.125	2568	13.940	18:39
2	52	0.0189	0.589	55	0.482	19:06
3	138	0.0105	0.125	53	0.267	21:29
4	315	10.4864	54.789	2304	267.682	26:31
5	531	1.9866	6.156	695	50.712	31:20
6	606	0.8085	2.196	462	20.638	32:34
7	6000 (UM)	0.0401	0.011	2815	12.296	40:51
TIC:		13.3109	63.856			
Total Conc.		14.2369				

**Sample:** D13-2457TE

**Well Location:** A4

**Created:** Friday, June 07, 2013 5:21:23 PM

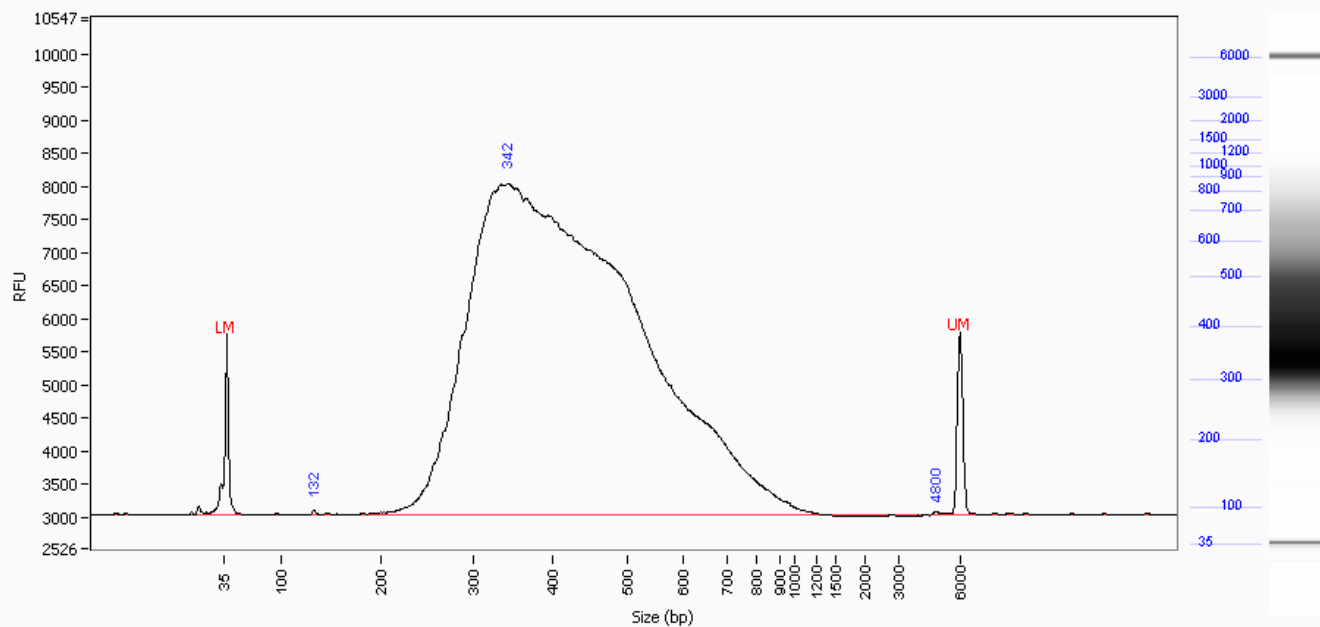


Peak	Size (bp)	Conc. (ng/uL)	Molarity (nmole/L)	Peak Height (RFU)	Corr. Peak Area	Norm. MT (mm:ss)
1	35 (LM)	0.0455	2.125	2141	10.117	18:39
2	303	1.0523	5.711	212	19.495	26:14
3	6000 (UM)	0.0509	0.014	2662	11.319	40:51
TIC:		1.0523	5.711			
Total Conc.		2.6826				

**Sample:** D13-2458TE

**Well Location:** A5

**Created:** Friday, June 07, 2013 5:21:23 PM

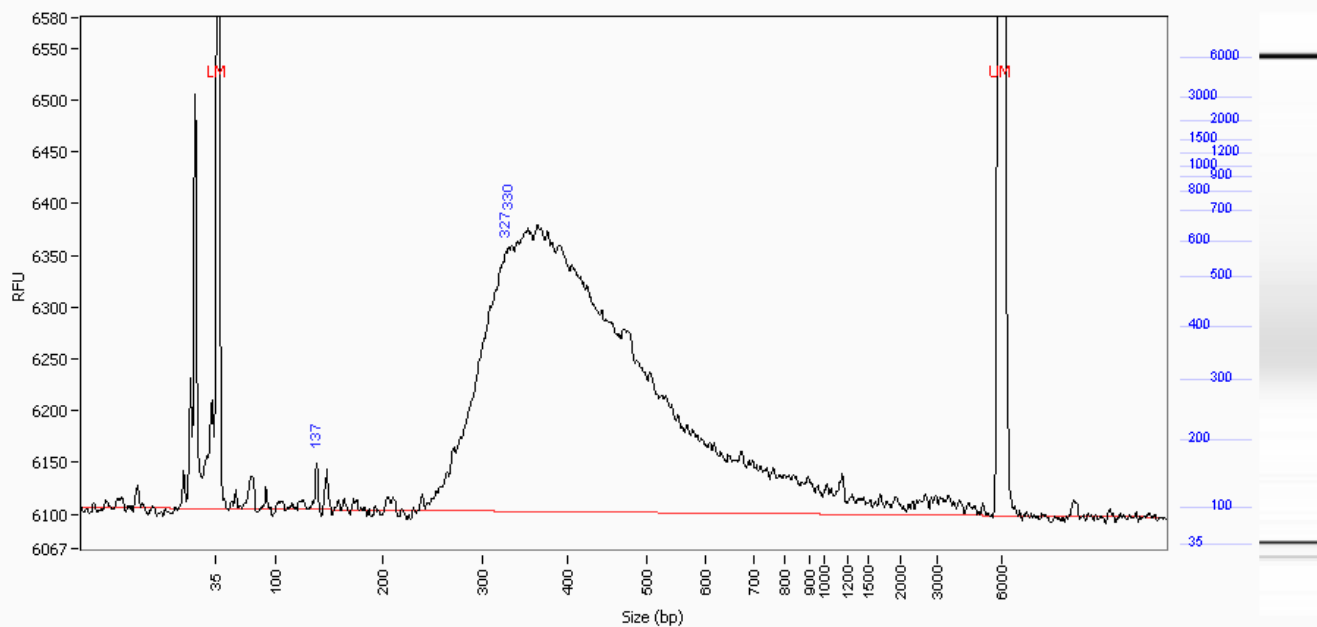


Peak	Size (bp)	Conc. (ng/uL)	Molarity (nmole/L)	Peak Height (RFU)	Corr. Peak Area	Norm. MT (mm:ss)
1	35 (LM)	0.0455	2.125	2736	18.937	18:39
2	132	0.0105	0.131	68	0.363	21:18
3	342	28.2201	135.807	5003	978.613	27:10
4	4800	0.0078	0.003	53	0.269	40:07
5	6000 (UM)	0.0306	0.008	2764	12.734	40:51
TIC:		28.2383	135.941			
Total Conc.		28.2555				

**Sample:** D13-2459TE

**Well Location:** A6

**Created:** Friday, June 07, 2013 5:21:23 PM

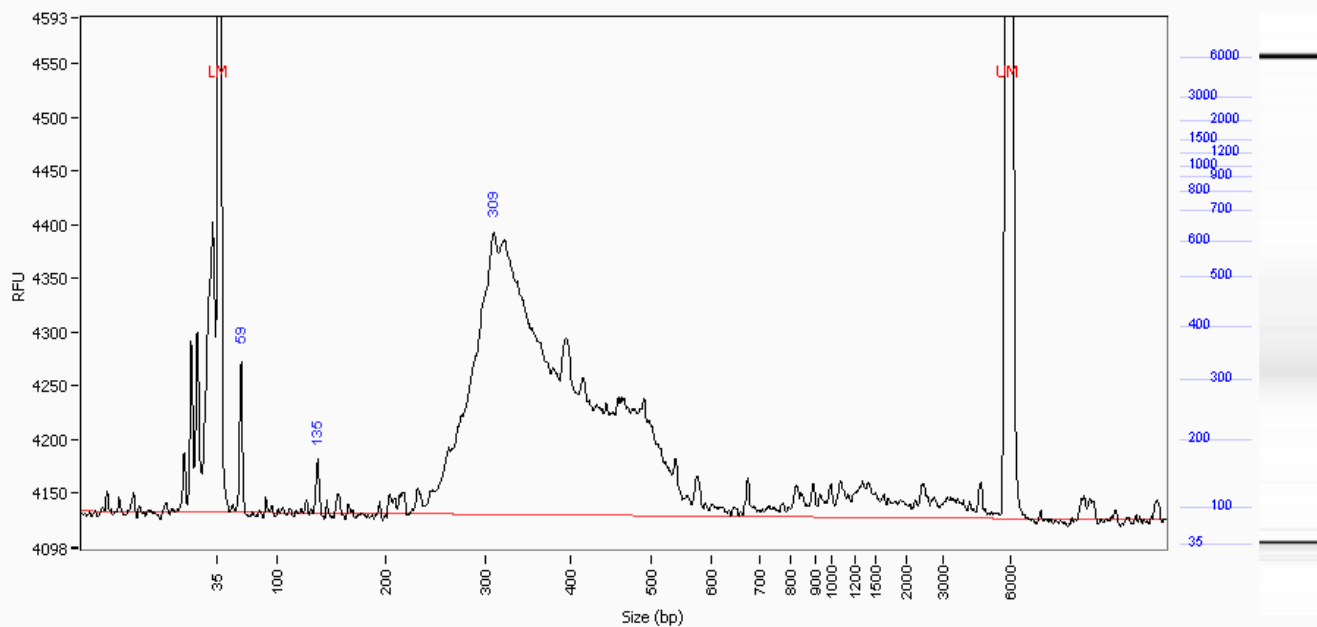


Peak	Size (bp)	Conc. (ng/uL)	Molarity (nmole/L)	Peak Height (RFU)	Corr. Peak Area	Norm. MT (mm:ss)
1	35 (LM)	0.0455	2.125	1783	8.115	18:39
2	137	0.0139	0.167	45	0.206	21:27
3	327	0.6069	3.057	250	9.019	26:48
4	330	1.5170	7.561	277	22.544	26:53
5	6000 (UM)	0.0502	0.014	2113	8.947	40:51
TIC:		2.1378	10.784			
Total Conc.		3.4524				

**Sample:** D13-2460TE

**Well Location:** A7

**Created:** Friday, June 07, 2013 5:21:23 PM



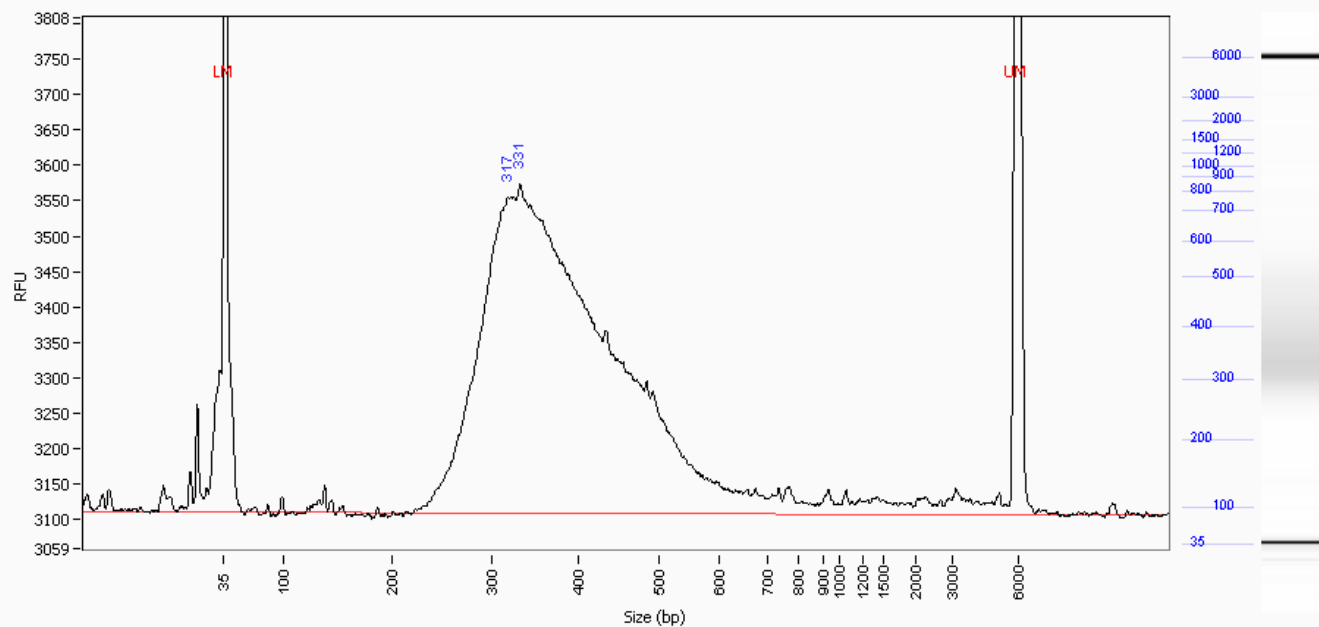
Peak	Size (bp)	Conc. (ng/uL)	Molarity (nmole/L)	Peak Height (RFU)	Corr. Peak Area	Norm. MT (mm:ss)
1	35 (LM)	0.0455	2.125	2358	11.228	18:39
2	59	0.0340	0.948	140	0.700	19:16
3	135	0.0122	0.149	50	0.252	21:25
4	309	0.8258	4.402	263	16.978	26:22
5	6000 (UM)	0.0458	0.013	2710	11.297	40:51
TIC:		0.8721	5.499			
Total Conc.		1.7754				



**Sample:** D13-2461TE

**Well Location:** A8

**Created:** Friday, June 07, 2013 5:21:23 PM

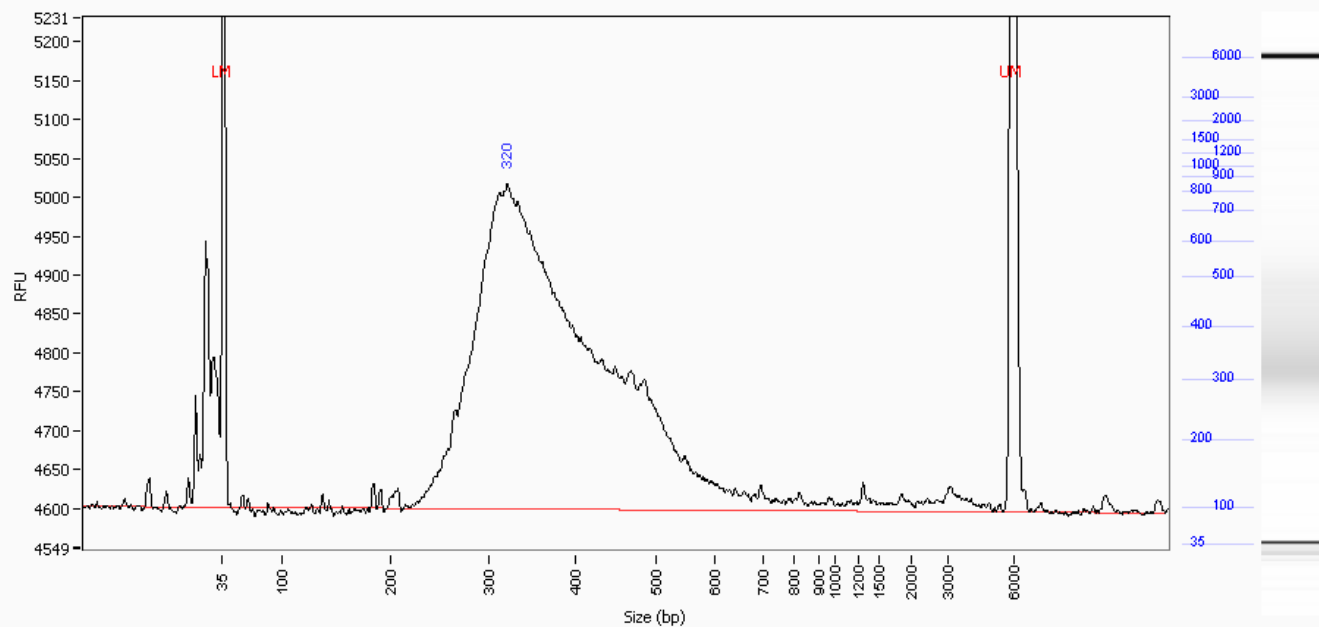


Peak	Size (bp)	Conc. (ng/uL)	Molarity (nmole/L)	Peak Height (RFU)	Corr. Peak Area	Norm. MT (mm:ss)
1	35 (LM)	0.0455	2.125	2660	17.294	18:39
2	317	0.6377	3.310	447	20.194	26:34
3	331	0.6761	3.362	465	21.410	26:54
4	6000 (UM)	0.0311	0.009	2831	11.808	40:51
TIC:		1.3137	6.672			
Total Conc.		2.2455				

**Sample:** D13-2462TE

**Well Location:** A9

**Created:** Friday, June 07, 2013 5:21:23 PM

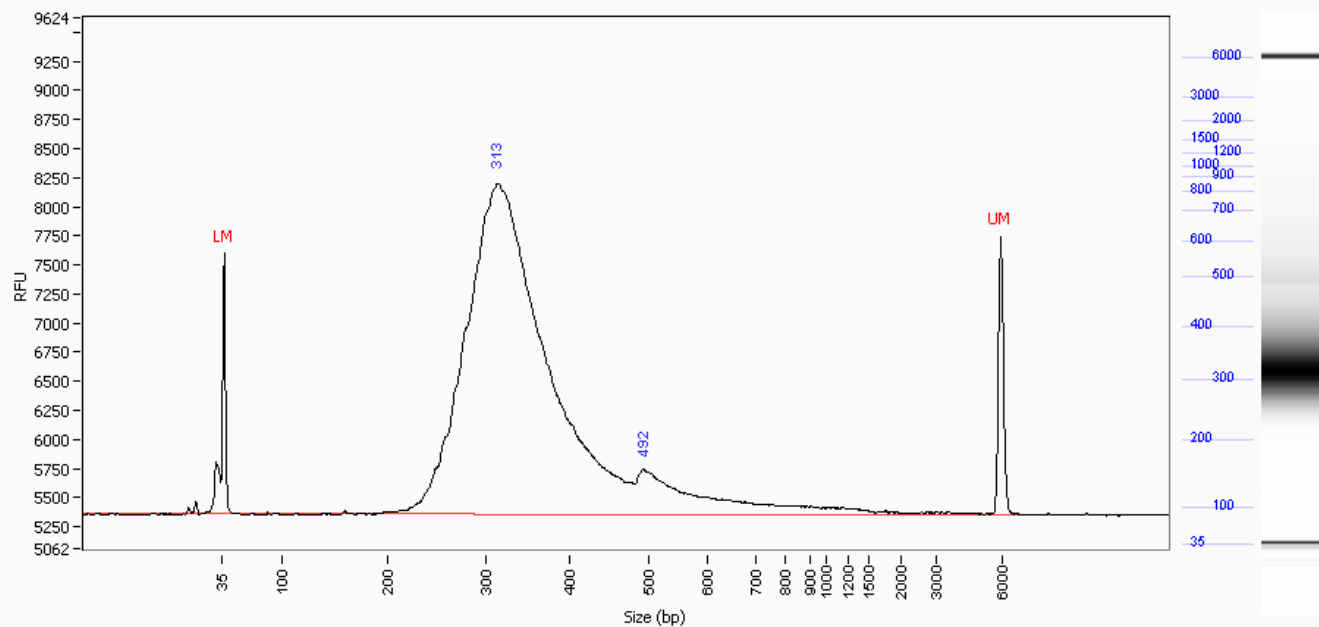


Peak	Size (bp)	Conc. (ng/uL)	Molarity (nmole/L)	Peak Height (RFU)	Corr. Peak Area	Norm. MT (mm:ss)
1	35 (LM)	0.0455	2.125	1956	8.870	18:39
2	320	2.7019	13.903	418	43.887	26:38
3	6000 (UM)	0.0535	0.015	2469	10.424	40:51
TIC:		2.7019	13.903			
Total Conc.		3.7120				

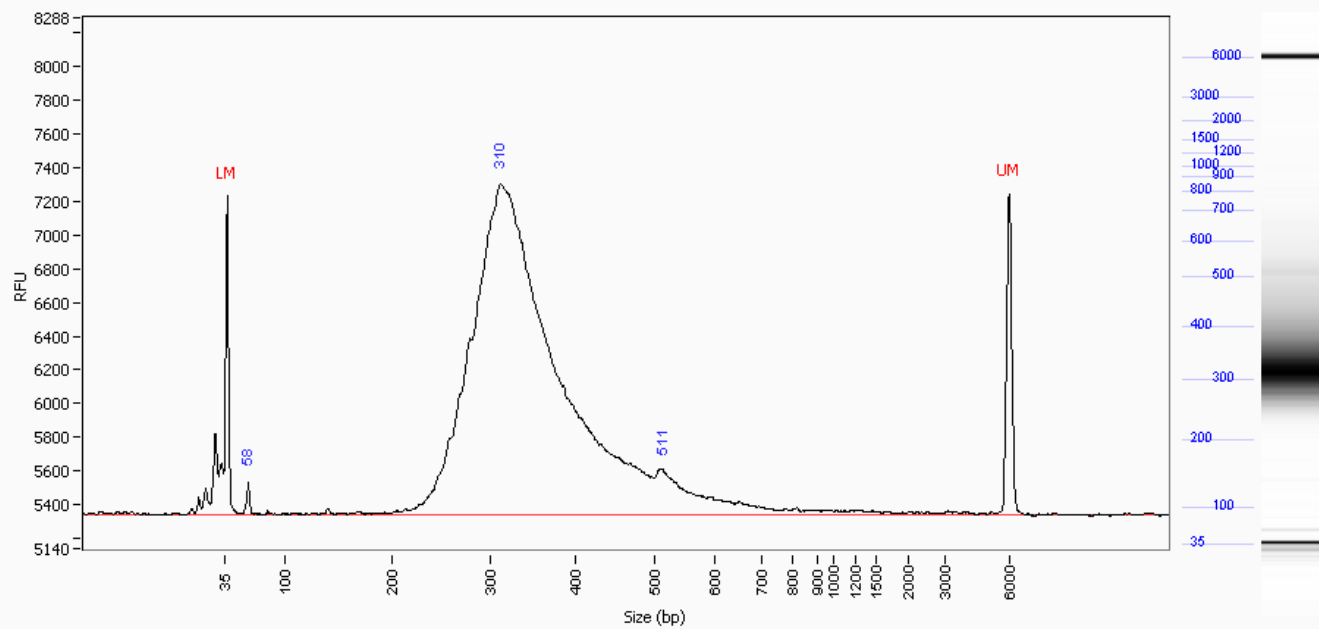
**Sample:** D13-2463TE

**Well Location:** A10

**Created:** Friday, June 07, 2013 5:21:23 PM



Peak	Size (bp)	Conc. (ng/uL)	Molarity (nmole/L)	Peak Height (RFU)	Corr. Peak Area	Norm. MT (mm:ss)
1	35 (LM)	0.0455	2.125	2240	11.014	18:39
2	313	13.4154	70.558	2840	270.573	26:28
3	492	0.7986	2.672	387	16.107	30:38
4	6000 (UM)	0.0413	0.011	2394	9.995	40:51
TIC:		14.2140	73.229			
Total Conc.		14.8966				

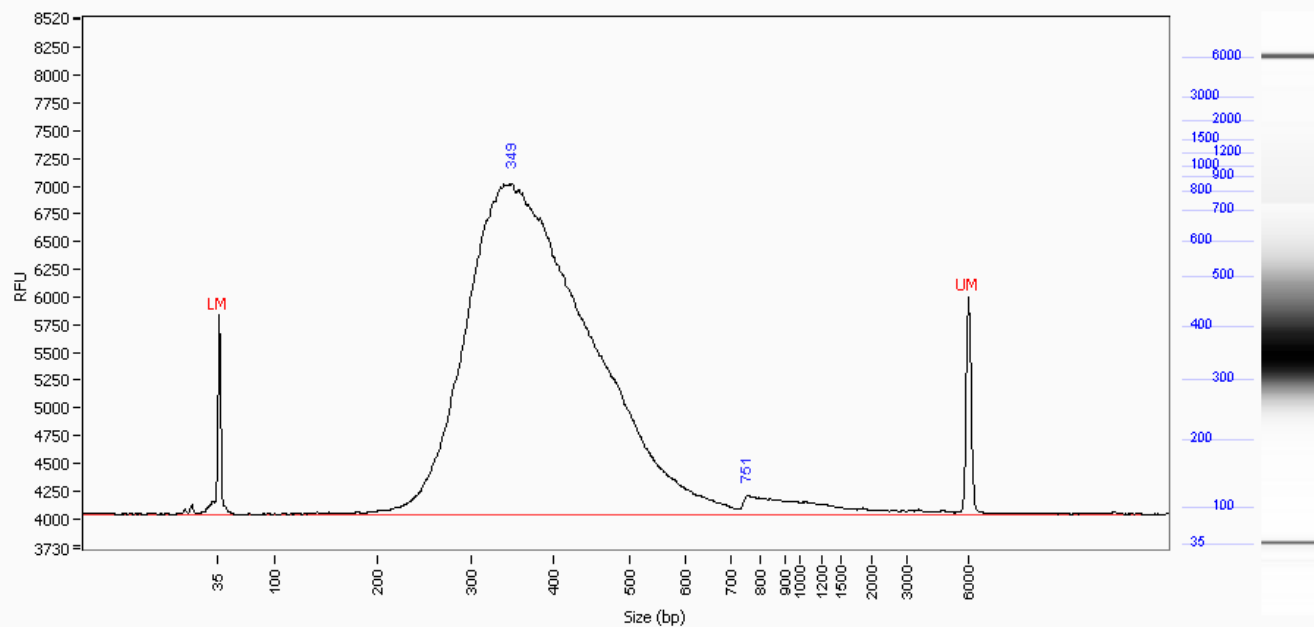
**Sample:** D13-2464TE**Well Location:** A11**Created:** Friday, June 07, 2013 5:21:23 PM

Peak	Size (bp)	Conc. (ng/uL)	Molarity (nmole/L)	Peak Height (RFU)	Corr. Peak Area	Norm. MT (mm:ss)
1	35 (LM)	0.0455	2.125	1890	11.818	18:39
2	58	0.0455	1.281	189	0.984	19:15
3	310	8.6656	45.983	1963	187.536	26:24
4	511	0.4052	1.305	270	8.770	31:00
5	6000 (UM)	0.0312	0.009	1905	8.090	40:51
TIC:		9.1163	48.569			
Total Conc.		9.7633				

**Sample:** D13-2465TE

**Well Location:** A12

**Created:** Friday, June 07, 2013 5:21:23 PM



Peak	Size (bp)	Conc. (ng/uL)	Molarity (nmole/L)	Peak Height (RFU)	Corr. Peak Area	Norm. MT (mm:ss)
1	35 (LM)	0.0455	2.125	1794	9.531	18:39
2	349	24.7875	116.922	2983	432.595	27:20
3	751	0.2336	0.512	165	4.078	34:17
4	6000 (UM)	0.0406	0.011	1962	8.507	40:51
TIC:		25.0211	117.434			
Total Conc.		25.5795				

ID	Range	ng/uL	% Total	nmole/L	Avg. Size	%CV
A1: D13-2454TE	224 bp to 585 bp	12.086	94.4	56.3479	353	20.7
A2: D13-2455TE	224 bp to 585 bp	15.840	87.5	70.8605	368	23.1
A3: D13-2456TE	224 bp to 585 bp	12.430	87.3	56.6212	361	23.2
A4: D13-2457TE	224 bp to 585 bp	2.107	78.5	9.0279	384	24.4
A5: D13-2458TE	224 bp to 585 bp	25.464	90.1	104.6566	400	20.4
A6: D13-2459TE	224 bp to 585 bp	2.941	85.2	12.1554	398	19.0
A7: D13-2460TE	224 bp to 585 bp	1.540	86.8	6.8311	371	20.2
A8: D13-2461TE	224 bp to 585 bp	2.061	91.8	9.0363	375	19.5
A9: D13-2462TE	224 bp to 585 bp	3.453	93.0	15.3143	371	20.3
A10: D13-2463TE	224 bp to 585 bp	14.181	95.2	68.0478	343	19.4
A11: D13-2464TE	224 bp to 585 bp	9.328	95.5	44.1870	347	19.7
A12: D13-2465TE	224 bp to 585 bp	24.298	95.0	105.5306	379	18.7