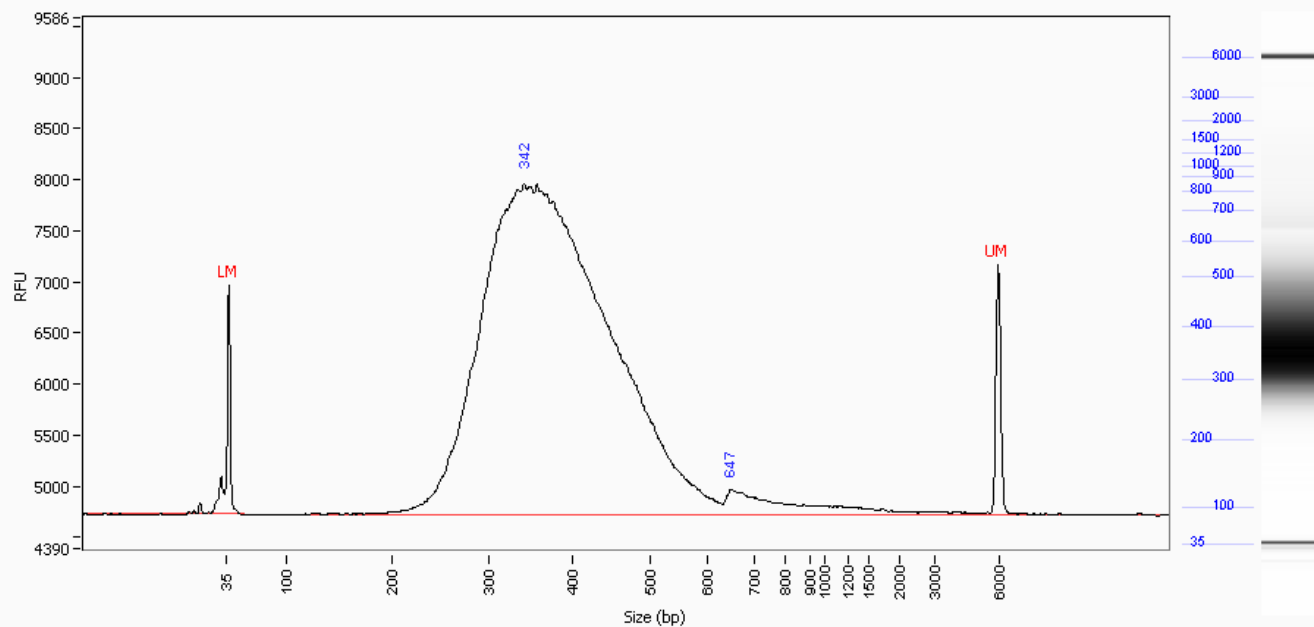


Fragment Analyzer Run Summary:**Filename and Data Path:** C:\AATI\Data\2013 06 07\130524Wax_2466TE-2468TE_130607Sha_2691-2698 18**Filename and Data Path:** -06-34\2013 06 07 18H 06M.raw**Created:** Friday, June 07, 2013 6:22:32 PM**# of Capillaries:** 3**Analysis Mode:** NGS

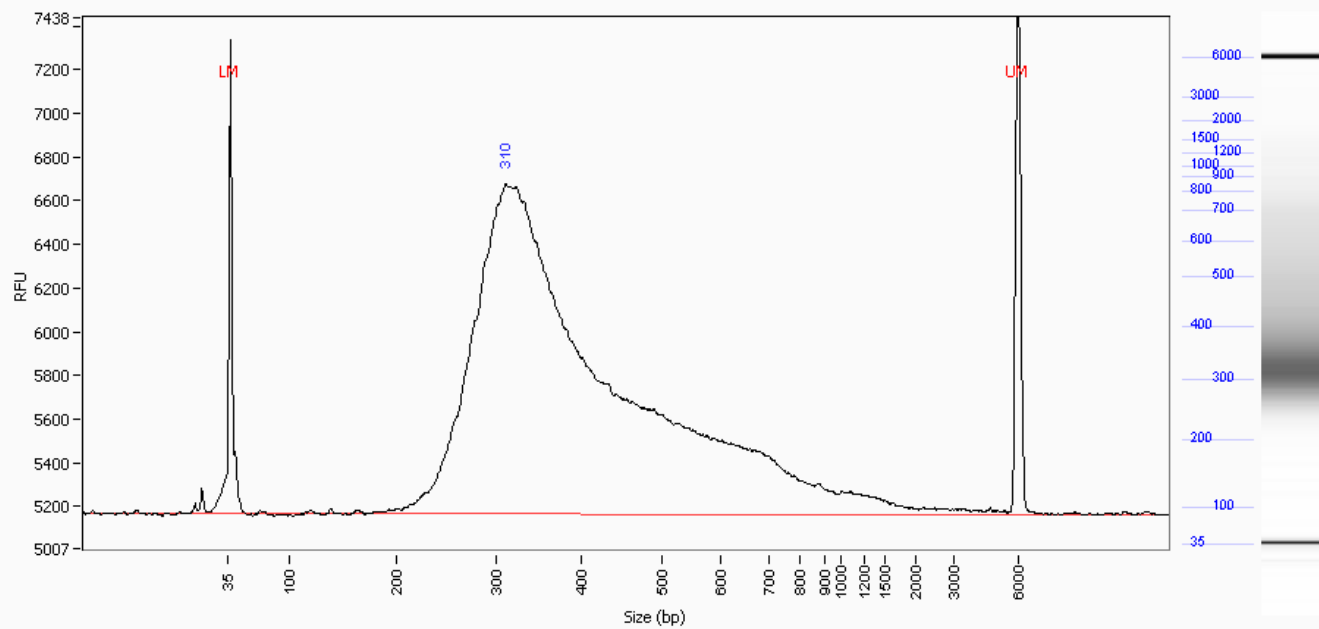
Sample: D13-2466TE

Well Location: B1

Created: Friday, June 07, 2013 6:22:32 PM



Peak	Size (bp)	Conc. (ng/uL)	Molarity (nmole/L)	Peak Height (RFU)	Corr. Peak Area	Norm. MT (mm:ss)
1	35 (LM)	0.0455	2.125	2236	11.590	18:39
2	342	22.5242	108.396	3239	478.034	27:10
3	647	0.2998	0.763	243	6.363	33:07
4	6000 (UM)	0.0391	0.011	2458	9.966	40:51
TIC:		22.8241	109.159			
Total Conc.		23.3397				

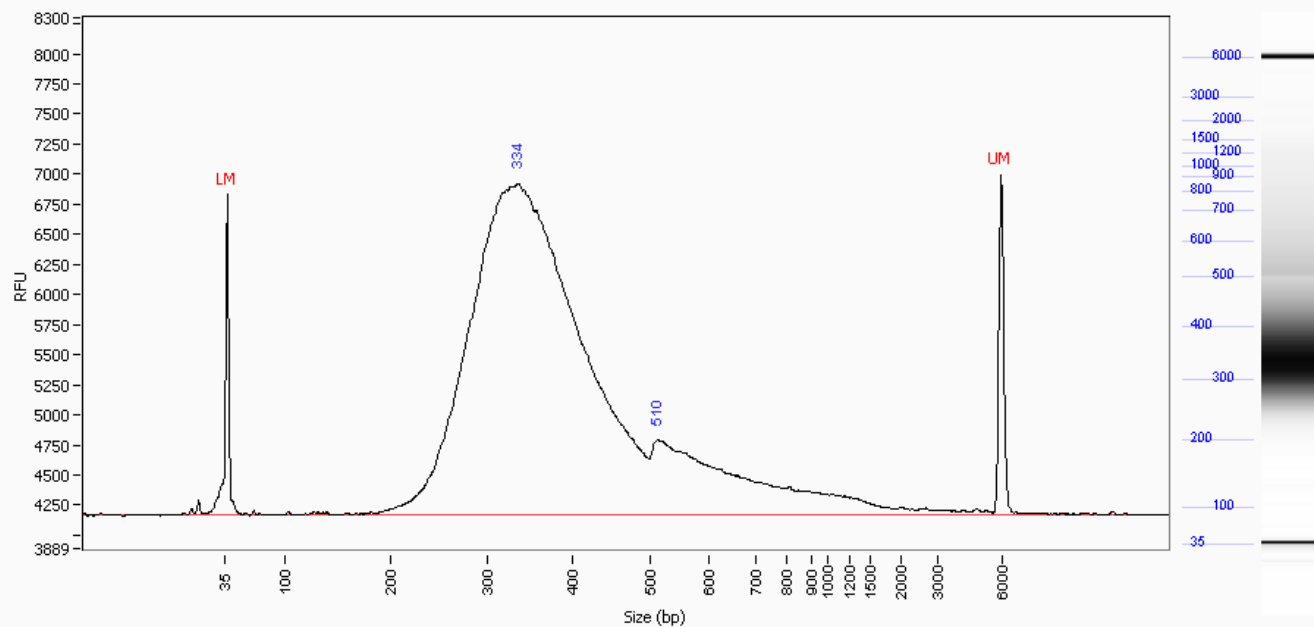
Sample: D13-2467TE**Well Location:** B2**Created:** Friday, June 07, 2013 6:22:32 PM

Peak	Size (bp)	Conc. (ng/uL)	Molarity (nmole/L)	Peak Height (RFU)	Corr. Peak Area	Norm. MT (mm:ss)
1	35 (LM)	0.0455	2.125	2170	13.962	18:39
2	310	7.2552	38.499	1513	185.498	26:24
3	6000 (UM)	0.0334	0.009	2525	10.238	40:51
TIC:		7.2552	38.499			
Total Conc.		9.3126				

Sample: D13-2468TE

Well Location: B3

Created: Friday, June 07, 2013 6:22:32 PM



Peak	Size (bp)	Conc. (ng/uL)	Molarity (nmole/L)	Peak Height (RFU)	Corr. Peak Area	Norm. MT (mm:ss)
1	35 (LM)	0.0455	2.125	2656	16.636	18:39
2	334	11.7284	57.727	2749	357.290	26:59
3	510	0.9000	2.904	622	27.418	30:59
4	6000 (UM)	0.0318	0.009	2824	11.626	40:51
TIC:		12.6284	60.631			
Total Conc.		13.7903				

ID	Range	ng/uL	% Total	nmole/L	Avg. Size	%CV
B1: D13-2466TE	220 bp to 587 bp	22.354	95.8	97.6321	377	18.5
B2: D13-2467TE	228 bp to 478 bp	7.127	76.5	33.9833	345	17.0
B3: D13-2468TE	239 bp to 496 bp	11.523	83.6	54.0248	351	16.5