

Fragment Analyzer Run Summary:

Filename and Data Path: C:\AATI\Data\2013 12 06\Mike1-5_131127Wax_6252-6258TE 14-36-09\2013 12 06 14H 36M.raw

Created: Friday, December 06, 2013 2:51:36 PM

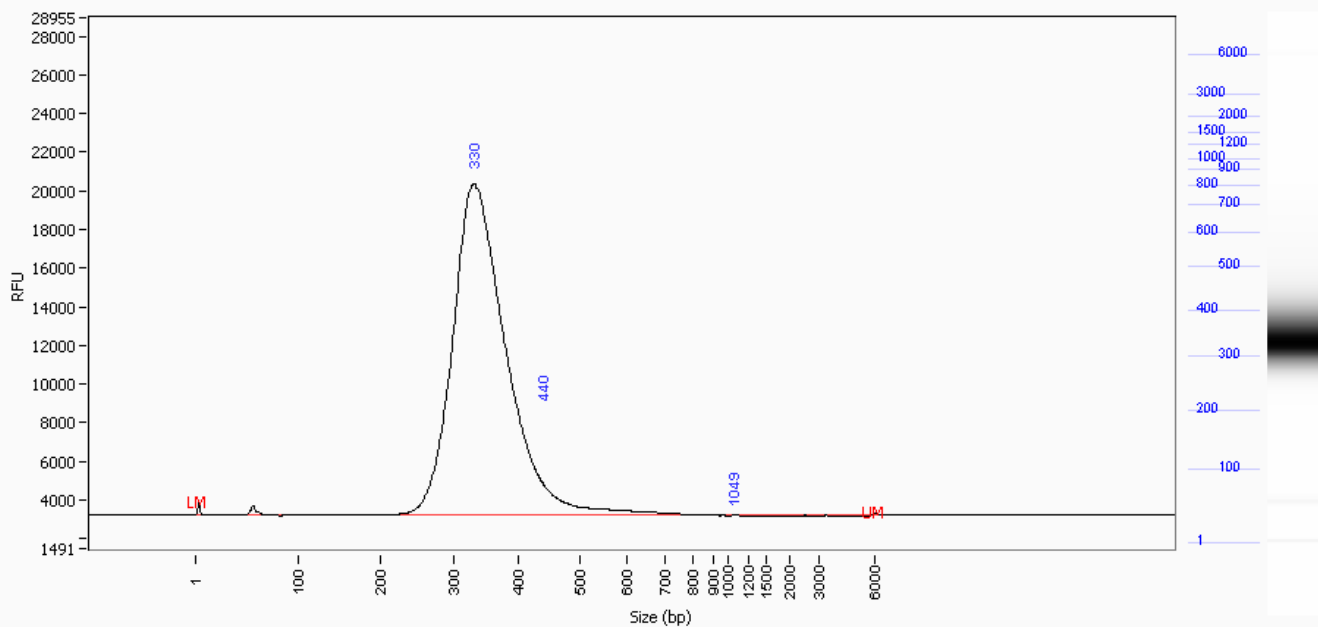
of Capillaries: 7

Analysis Mode: NGS

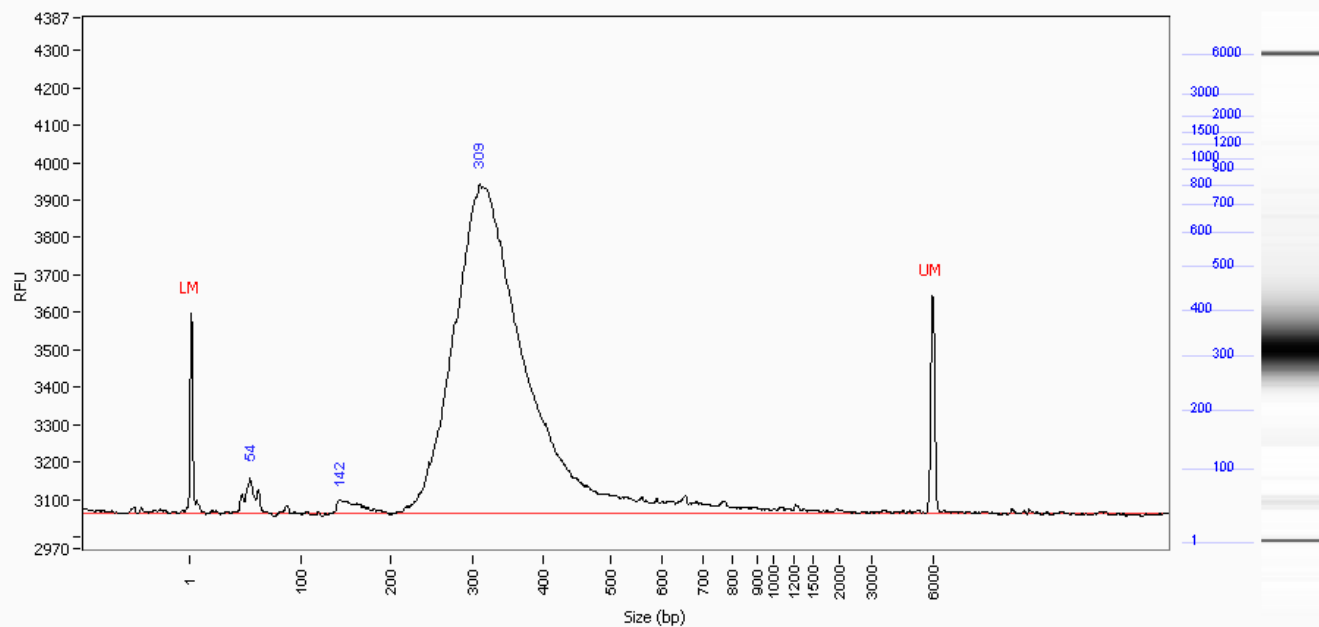
Sample: D13-6252TE

Well Location: E6

Created: Friday, December 06, 2013 2:51:36 PM



Peak	Size (bp)	Conc. (ng/uL)	Molarity (nmole/L)	Peak Height (RFU)	Corr. Peak Area	Norm. MT (mm:ss)
1	1 (LM)	0.0124	16.228	634	3.697	15:42
2	330	53.0203	264.138	17162	1315.353	24:34
3	440	5.2819	19.732	5206	131.035	26:48
4	1049	0.0009	0.001	11	0.021	32:53
5	6000 (UM)	0.0041	0.001	139	1.206	37:23
TIC:		58.3030	283.872			
Total Conc.		53.3316				

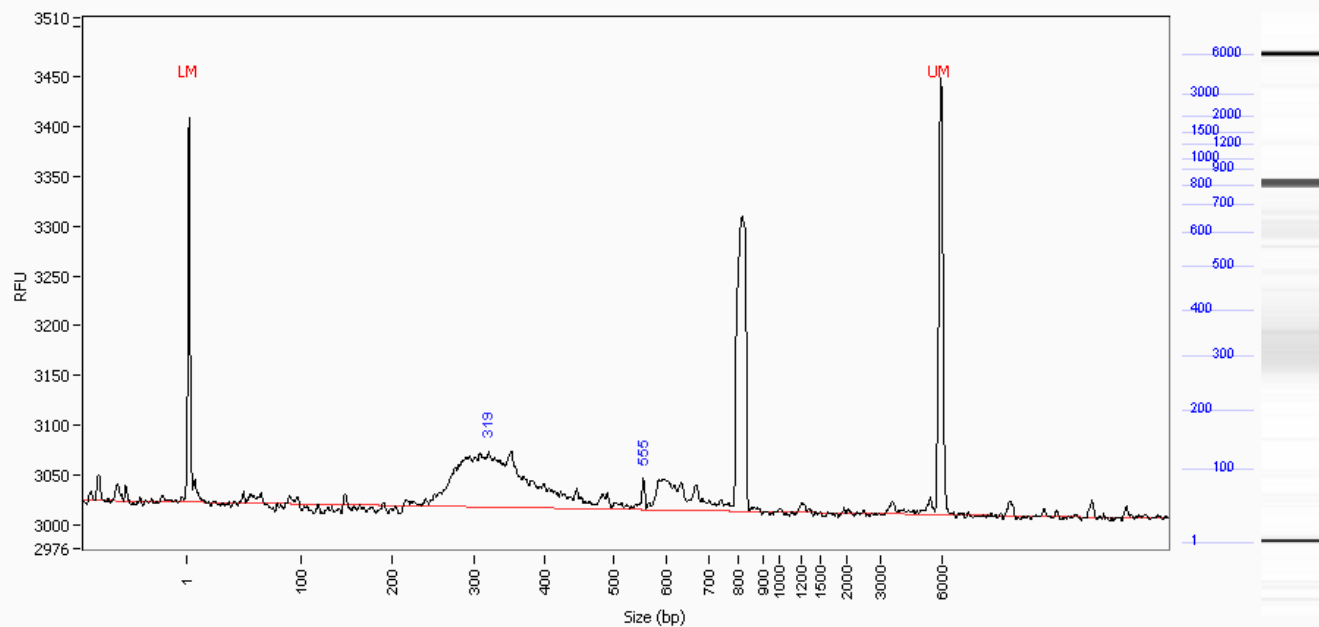
Sample: D13-6253TE**Well Location:** E7**Created:** Friday, December 06, 2013 2:51:36 PM

Peak	Size (bp)	Conc. (ng/uL)	Molarity (nmole/L)	Peak Height (RFU)	Corr. Peak Area	Norm. MT (mm:ss)
1	1 (LM)	0.0124	16.228	534	3.162	15:42
2	54	0.1048	3.195	93	2.225	17:26
3	142	0.0641	0.741	36	1.361	20:04
4	309	4.0376	21.487	879	85.675	24:08
5	6000 (UM)	0.0085	0.002	579	2.168	37:23
TIC:		4.2066	25.422			
Total Conc.		4.3489				

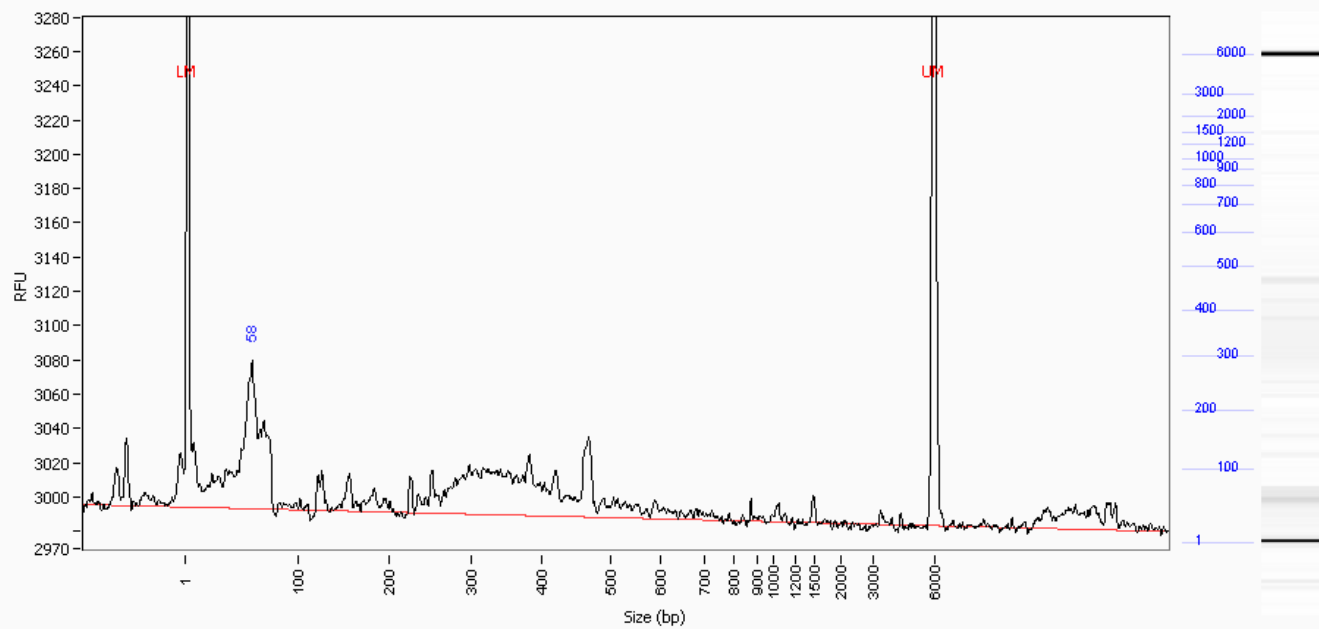
Sample: D13-6254TE

Well Location: E8

Created: Friday, December 06, 2013 2:51:36 PM



Peak	Size (bp)	Conc. (ng/uL)	Molarity (nmole/L)	Peak Height (RFU)	Corr. Peak Area	Norm. MT (mm:ss)
1	1 (LM)	0.0124	16.228	387	2.274	15:42
2	319	0.3663	1.890	56	5.591	24:20
3	555	0.0855	0.254	31	1.305	28:48
4	6000 (UM)	0.0090	0.002	439	1.649	37:23
TIC:		0.4519	2.144			
Total Conc.		0.7105				

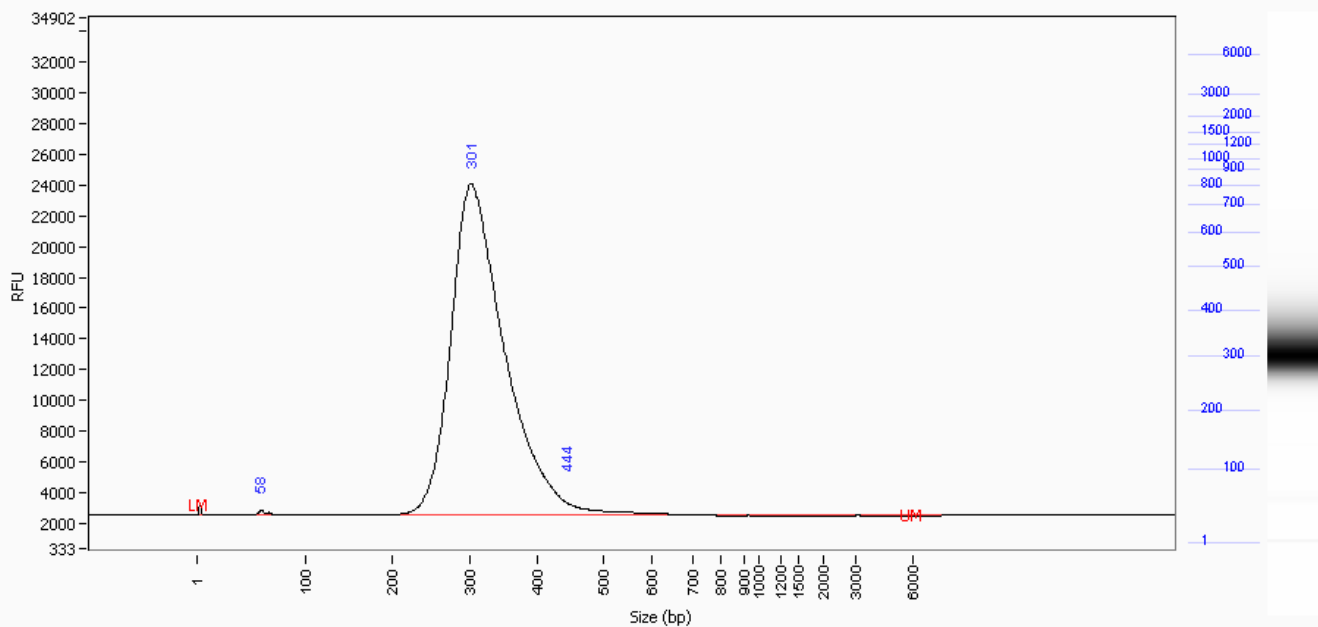
Sample: D13-6255TE**Well Location:** E9**Created:** Friday, December 06, 2013 2:51:36 PM

Peak	Size (bp)	Conc. (ng/uL)	Molarity (nmole/L)	Peak Height (RFU)	Corr. Peak Area	Norm. MT (mm:ss)
1	1 (LM)	0.0124	16.228	573	3.616	15:42
2	58	0.1724	4.889	87	4.183	17:34
3	6000 (UM)	0.0076	0.002	577	2.209	37:23
TIC:		0.1724	4.889			
Total Conc.		0.4054				

Sample: D13-6256TE

Well Location: E10

Created: Friday, December 06, 2013 2:51:36 PM

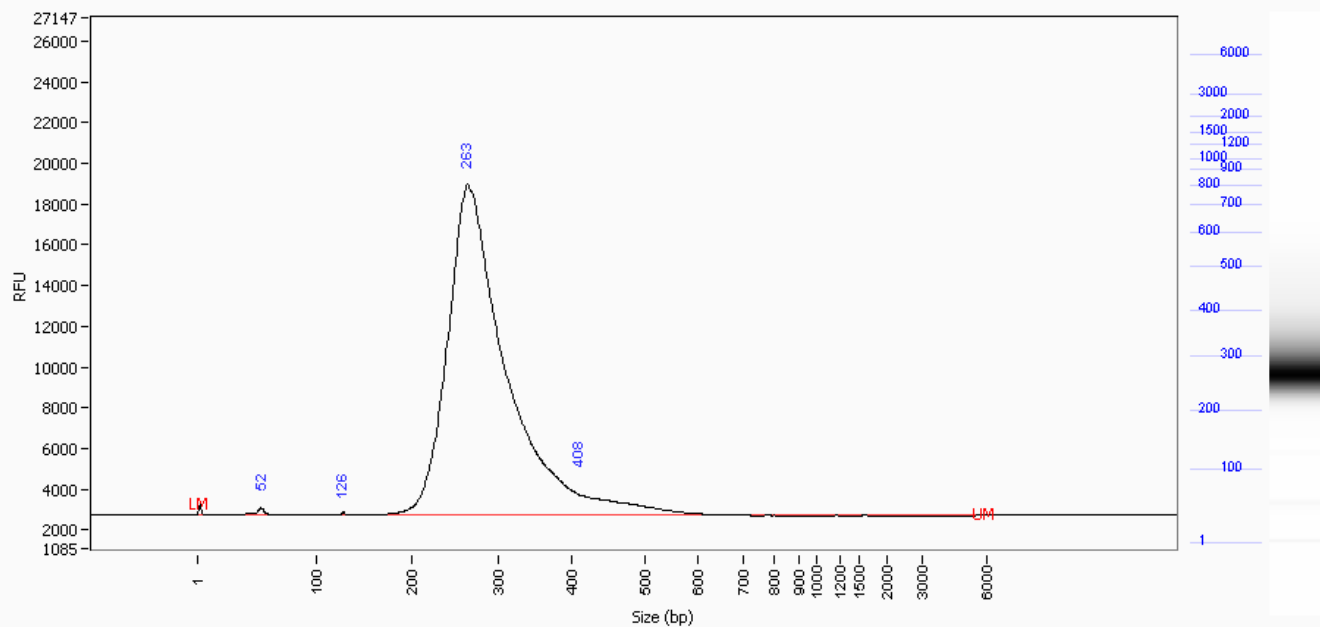


Peak	Size (bp)	Conc. (ng/uL)	Molarity (nmole/L)	Peak Height (RFU)	Corr. Peak Area	Norm. MT (mm:ss)
1	1 (LM)	0.0124	16.228	652	3.578	15:42
2	58	0.2732	7.683	345	6.560	17:35
3	301	69.8447	381.696	21601	1676.849	23:58
4	444	1.6402	6.081	1972	39.378	26:52
5	6000 (UM)	0.0000	0.000	0	0.000	37:23
TIC:		71.7581	395.460			
Total Conc.		70.1543				

Sample: D13-6257TE

Well Location: E11

Created: Friday, December 06, 2013 2:51:36 PM

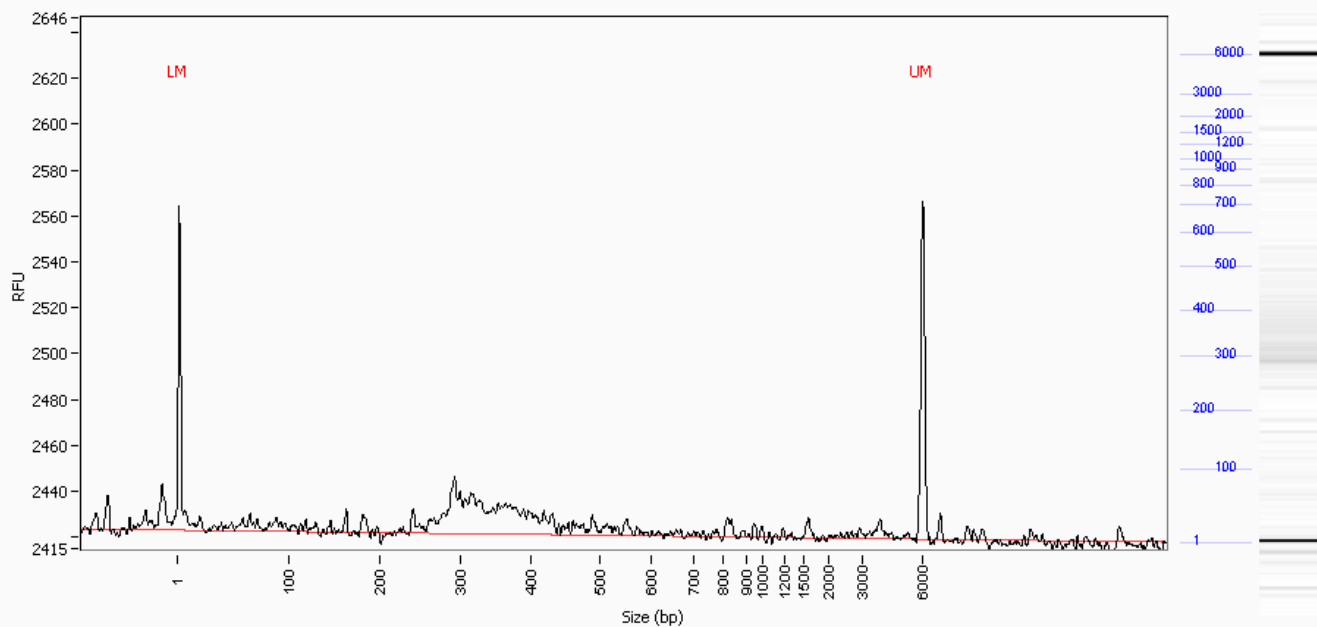


Peak	Size (bp)	Conc. (ng/uL)	Molarity (nmole/L)	Peak Height (RFU)	Corr. Peak Area	Norm. MT (mm:ss)
1	1 (LM)	0.0124	16.228	503	3.146	15:42
2	52	0.3203	10.042	360	6.762	17:23
3	126	0.0661	0.859	153	1.395	19:39
4	263	64.7743	404.331	16280	1367.444	23:05
5	408	2.3382	9.436	1713	49.362	26:09
6	6000 (UM)	0.0019	0.001	17	0.484	37:23
TIC:		67.4989	424.668			
Total Conc.		65.1865				

Sample: D13-6258TE

Well Location: E12

Created: Friday, December 06, 2013 2:51:36 PM



Peak	Size (bp)	Conc. (ng/uL)	Molarity (nmole/L)	Peak Height (RFU)	Corr. Peak Area	Norm. MT (mm:ss)
1	1 (LM)	0.0124	16.228	142	0.895	15:42
2	1	0.0132	17.195	142	0.948	15:42
3	6000	0.0075	0.002	147	0.539	37:23
4	6000 (UM)	0.0075	0.002	147	0.541	37:23
TIC:		0.0206	17.197			
Total Conc.		0.5089				

ID	Range	ng/uL	% Total	nmole/L	Avg. Size	%CV
E6: D13-6252TE	219 bp to 609 bp	52.652	98.7	250.8449	345	14.2
E7: D13-6253TE	219 bp to 609 bp	4.036	92.8	19.7364	336	18.4
E8: D13-6254TE	219 bp to 497 bp	0.384	54.1	1.8728	338	16.9
E9: D13-6255TE	219 bp to 609 bp	0.191	47.2	0.8406	375	23.5
E10: D13-6256TE	219 bp to 493 bp	69.078	98.5	356.9003	318	13.2
E11: D13-6257TE	181 bp to 609 bp	64.581	99.1	364.5082	291	19.6
E12: D13-6258TE	219 bp to 609 bp	0.343	67.3	1.5670	360	22.2